



GENESIS
DEVELOPERS
LLC

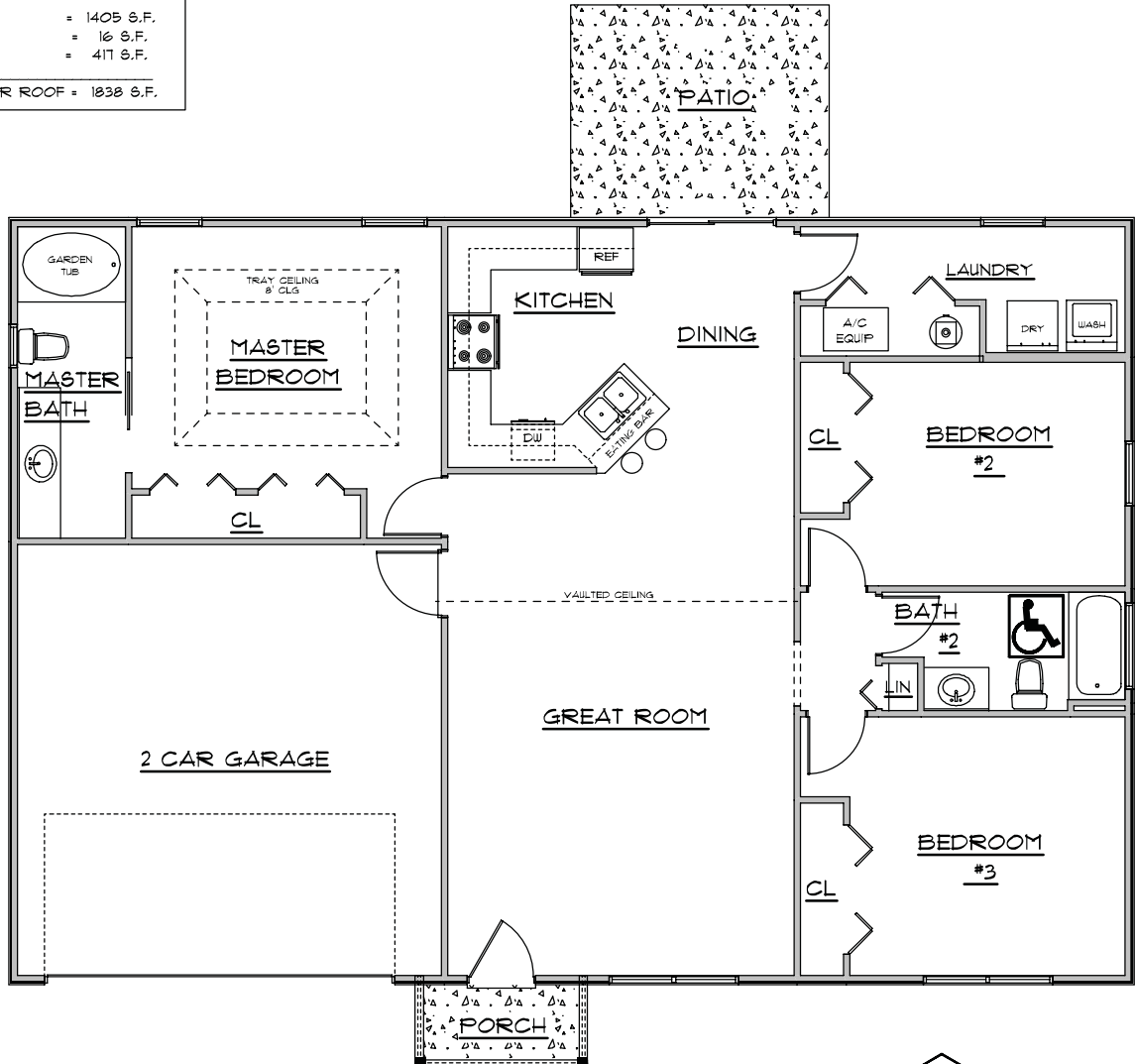
Quality Homes Built By:

Bryan Zecher
CONSTRUCTION



*** THE JENNIFER ***
*** FLOOR PLAN ***

A/C LIVING AREA = 1405 S.F.
FRONT PORCH = 16 S.F.
2-CAR GARAGE = 411 S.F.
TOTAL AREA UNDER ROOF = 1832 S.F.



Equal Housing Opportunity